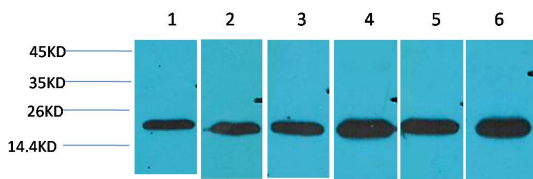
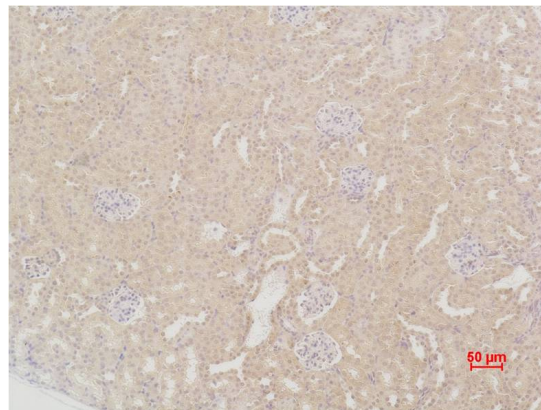


Product name:	SOD2 Rabbit Polyclonal Antibody
Cat number:	ABE211
Conjugate:	unconjugated
Size:	100 ug
Clone:	Polyclonal
Concentration:	1mg/mL
Host:	Rabbit
Isotype:	IgG
Immunogen:	Recombinant Protein
Reactivity:	Human, Rat, Mouse
Applications:	WB 1:1,000-2,000 IHC 1:200-500
Molecular Weight:	22kDa
Form:	liquid
Buffer:	PBS with 0.02% sodium azide and 50% glycerol pH 7.4.
Storage:	Store at -20°C. Avoid repeated freeze-thaw cycles.
Background:	Superoxide dismutase 2, mitochondrial, also known as SOD2, is an enzyme which in humans is encoded by the SOD2 gene. This gene is a member of the iron/manganese superoxide dismutase family. It encodes a mitochondrial matrix protein that forms a homotetramer and binds one manganese ion per subunit.



Western blot analysis of 1) HeLa, 2) HepG2, 3) C2C12, 4) Mouse Liver Tissue, 5) Rat Brain Tissue, 6) Rat Liver Tissue with SOD2 Rabbit pAb diluted at 1:2,000.



Immunohistochemical analysis of paraffin-embedded Mouse Kidney Tissue using SOD2 Rabbit pAb diluted at 1:200.