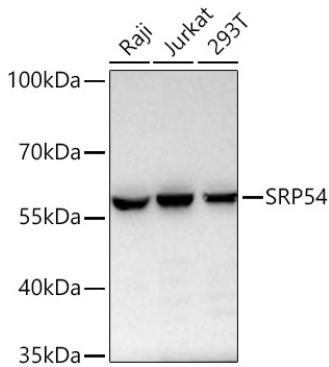
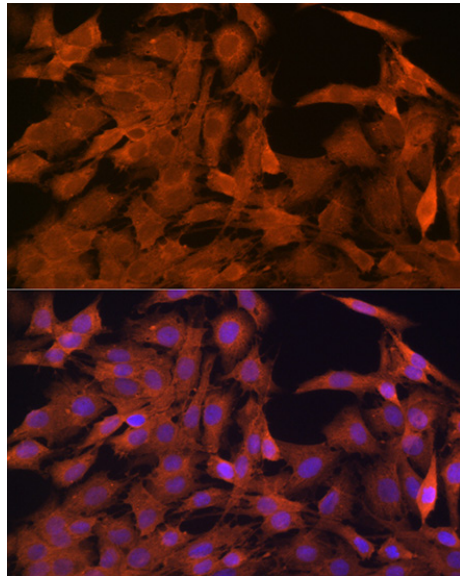


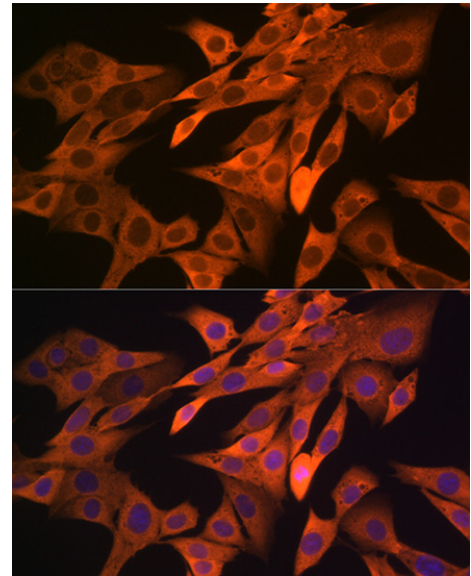
Product name:	SRP54 Rabbit Monoclonal Antibody
Cat number:	MAB2296
Conjugate:	Unconjugated
Size:	100 ug
Clone:	ARC1904
Concentration:	1mg/ml
Host:	Rabbit
Isotype:	IgG
Immunogen:	Synthetic peptide. This information is considered to be commercially sensitive.
Reactivity:	Human,Mouse,Rat
Applications:	WB 1:1000 - 1:5000 IF/ICC 1:50 - 1:200 ELISA Recommended starting concentration is 1 µg/mL. Please optimize the concentration based on your specific assay requirements.
Molecular Weight:	56kDa
Purification:	Affinity purification
Form:	liquid
Buffer:	PBS with 0.02% sodium azide,0.05% BSA,50% glycerol,pH7.3.
Storage:	Store at -20°C. Avoid freeze / thaw cycles.
Background:	Enables several functions, including 7S RNA binding activity; endoplasmic reticulum signal peptide binding activity; and guanyl ribonucleotide binding activity. Contributes to GTPase activity. Involved in granulocyte differentiation and protein targeting to ER. Located in cytosol and nucleus. Part of signal recognition particle, endoplasmic reticulum targeting. Implicated in severe congenital neutropenia 8.



Western blot analysis of various lysates using SRP54 Rabbit mAb at 1:4000 dilution incubated overnight at 4°C. Secondary antibody: HRP-conjugated Goat anti-Rabbit IgG (H+L) at 1:10000 dilution. Lysates/proteins: 25 µg per lane. Blocking buffer: 3% nonfat dry milk in TBST. Detection: ECL West Pico Plus. Exposure time: 60 s.



Immunofluorescence analysis of C6 cells using SRP54 Rabbit mAb at dilution of 1:100 (40x lens). Secondary antibody: Cy3-conjugated Goat anti-Rabbit IgG (H+L) at 1:500 dilution. Blue: DAPI for nuclear staining.



Immunofluorescence analysis of NIH-3T3 cells using SRP54 Rabbit mAb at dilution of 1:100 (40x lens). Secondary antibody: Cy3-conjugated Goat anti-Rabbit IgG (H+L) at 1:500 dilution. Blue: DAPI for nuclear staining.