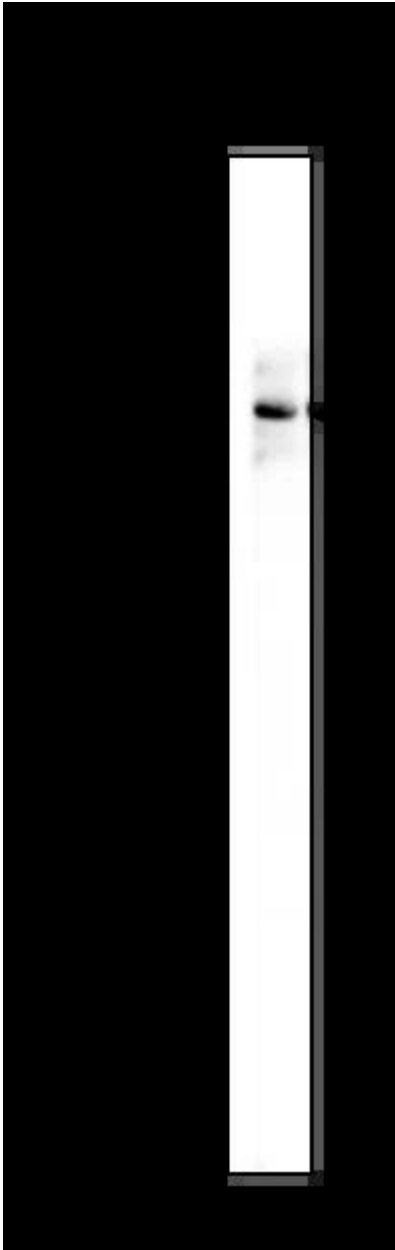

Product name:	STAT3 (Phospho Tyr705) Rabbit Monoclonal Antibody
Cat number:	MABN21081
Conjugate:	Phospho
Size:	100 ul
Concentration:	1mg/ml
Host:	Rabbit
Isotype:	IgG,Kappa
Immunogen:	A synthetic phosphorylated peptide corresponding to residues target protein.
Reactivity:	Human,Mouse,Rat
Applications:	WB 1:2000-1:10000,IHC 1:200-1:1000,ICC/IF 1:200-1:1000,ELISA 1:5000-1:20000,IP 1:50-1:200
Molecular Weight:	Calculated MW:88kD;Observed MW:88kD
Purification:	Affinity purification
Form:	liquid
Buffer:	PBS, 50% glycerol, 0.05% Proclin 300, 0.05%protective protein
Storage:	Store at 4°C short term. Aliquot and store at -20°C long term. Avoid freeze/thaw cycles.
Background:	<p>Cell localization:Cytoplasm . Nucleus . Shuttles between the nucleus and the cytoplasm. Translocated into the nucleus upon tyrosine phosphorylation and dimerization, in response to signaling by activated FGFR1, FGFR2, FGFR3 or FGFR4. Constitutive nuclear presence is independent of tyrosine phosphorylation. Predominantly present in the cytoplasm without stimuli. Upon leukemia inhibitory factor (LIF) stimulation, accumulates in the nucleus. The complex composed of BART and ARL2 plays an important role in the nuclear translocation and retention of STAT3. Identified in a complex with LYN and PAG1..The protein encoded by this gene is a member of the STAT protein family. In response to cytokines and growth factors, STAT family members are phosphorylated by the receptor associated kinases, and then form homo- or heterodimers that translocate to the cell nucleus where they act as transcription activators. This protein is activated through phosphorylation in response to various cytokines and growth factors including IFNs, EGF, IL5, IL6, HGF, LIF and BMP2. This protein mediates the expression of a variety of genes in response to cell stimuli, and thus plays a key role in many cellular processes such as cell growth and apoptosis. The small GTPase Rac1 has been shown to bind and regulate the activity of this protein. PIAS3 protein is a specific inhibitor of this protein. Mutations in this gene are associated with infantile-onset multisystem autoimmune disease and hyper</p>



HeLa whole cell lysates were separated by 10% SDS-PAGE, and the membrane was blotted with STAT3 (Phospho Tyr705) Rabbit Monoclonal Antibody(1:1000). The HRP-conjugated Goat anti-Rabbit IgG(H + L) antibody was used to detect the antibody.