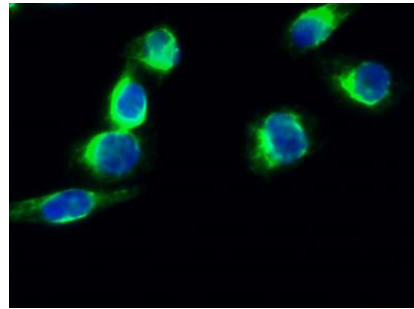
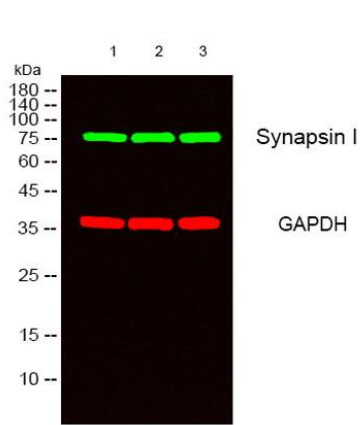
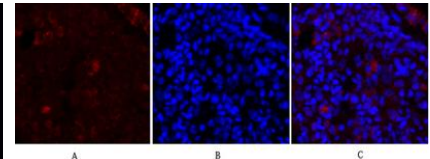


Product name:	Synapsyn I Rabbit Polyclonal Antibody
Cat number:	AB-83468
Conjugate:	Unconjugated
Size:	100 ug
Clone:	POLY
Concentration:	1mg/ml
Host:	Rabbit
Isotype:	IgG
Immunogen:	The antiserum was produced against synthesized peptide derived from human Synapsin. AA range:3-52
Reactivity:	Human, Mouse, Rat
Applications:	Western Blot: 1/500 - 1/2000. Immunohistochemistry: 1/100 - 1/300 Immunofluorescence: 1/200 - 1/1000
Molecular Weight:	74kD
Purification:	The antibody was affinity-purified from rabbit antiserum by affinity-chromatography using epitope-specific immunogen.
Form:	Liquid
Buffer:	Liquid in PBS containing 50% glycerol, 0.5% BSA and 0.02% sodium azide.
Storage:	Store at -20°C. Avoid repeated freeze-thaw cycles.
Background:	This gene is a member of the synapsin gene family. Synapsins encode neuronal phosphoproteins which associate with the cytoplasmic surface of synaptic vesicles. Family members are characterized by common protein domains, and they are implicated in synaptogenesis and the modulation of neurotransmitter release, suggesting a potential role in several neuropsychiatric diseases. This member of the synapsin family plays a role in regulation of axonogenesis and synaptogenesis. The protein encoded serves as a substrate for several different protein kinases and phosphorylation may function in the regulation of this protein in the nerve terminal. Mutations in this gene may be associated with X-linked disorders with primary neuronal degeneration such as Rett syndrome. Alternatively spliced transcript variants encoding different isoforms have been identified.

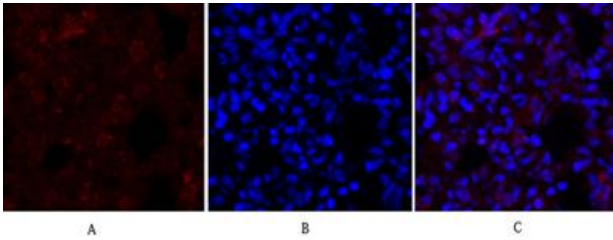


Immunofluorescence analysis of HeLa cell. 1, Synapsin I Polyclonal Antibody (green) was diluted at 1:200 (4° overnight). 2, Goat Anti Rabbit Alexa Fluor 488 was diluted at 1:1000 (room temperature, 50min). 3 DAPI (blue) 10min.



Immunofluorescence analysis of rat-lung tissue. 1, Synapsin I Polyclonal Antibody (red) was diluted at 1:200 (4° overnight). 2, Cy3 labeled Secondary antibody was diluted at 1:300 (room temperature, 50min). 3, Picture B: DAPI (blue) 10min. Picture A: Target.

Western blot analysis of lysates from 1) HeLa, 2) 293, 3) NIH-3T3 cells. [Green] primary antibody was diluted at 1:1000, 4° over night, secondary antibody was diluted at 1:10000, 37° 1hour. [Red] GAPDH Monoclonal Antibody (2B8) antibody was diluted at 1:5000 as loading control, 4° over night, secondary antibody was diluted at 1:10000, 37° 1hour.



Immunofluorescence analysis of rat-lung tissue. 1, Synapsin I Polyclonal Antibody (red) was diluted at 1:200 (4° overnight). 2, Cy3 labeled Secondary antibody was diluted at 1:300 (room temperature, 50min). 3, Picture B: DAPI (blue) 10min. Picture A: Target. Picture B: DAPI. Picture C: merge of A+B