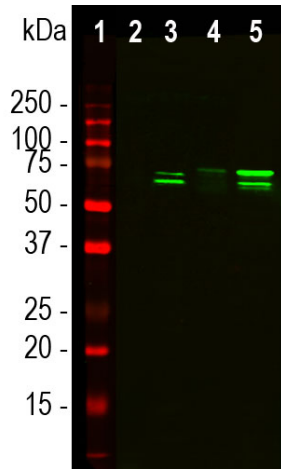
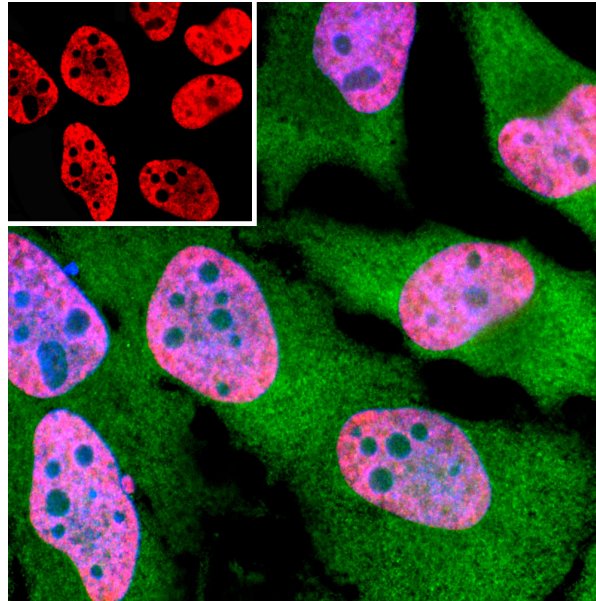

Product name:	TAF15
Cat number:	MAB-94394
Conjugate:	Unconjugated
Size:	100 ug
Clone:	4D71
Concentration:	1mg/ml
Host:	Ms
Isotype:	IgG1
Immunogen:	Full length recombinant human TAF15 expressed in and purified from E. coli.
Reactivity:	Hu Rt Ms
Applications:	WB 1:1,000. IF/ICC: 1:500-1:1,000
Molecular Weight:	56, 68kDa
Purification:	Purified
Form:	Liquid
Buffer:	Purified antibody at 1mg/mL in 50% PBS, 50% glycerol plus 5mM Na ₃
Storage:	Storage: Stable at 4°C for one year, for longer term store at -20°C
Background:	<p>TATA-binding protein-associated factor 2N, also known as TATA-binding protein-associated factor 15 (TAF15) is a protein containing a single RNA recognition motif domain and a Zinc finger domain. An alternate for TAF15 is RBP56, for RNA binding protein 56kDa (1). It is a member of a family of 3 closely related mammalian RNA binding proteins, the other two members are being FUS/TLS and EWSR1 (2,3). TDP43 is a more distant relative of these three, and all four proteins have been implicated in various ways the etiology of various neurological diseases and cancers. Like TDP43, FUS/TLS and EWSR1, TAF15 is normally widely expressed in tissues and is localized primarily in the nucleus of cells (2,3). Point mutations in TAF15 may be associated with some forms of Lou Gehrig's disease, also known as amyotrophic lateral sclerosis or ALS (4). FUS/TLS and TDP43 protein mutations and aggregation were previously known in various kinds of neurological disease including ALS and the related disease frontotemporal lobar degeneration (5). Some forms of cancer are caused by aberrant chromosomal fusions resulting in the production of oncoproteins containing segments of TAF15 fused to regions of other molecules, the same mechanism seen with FUS/TLS and especially EWSR1 (3). A screen for proteins likely to aggregate in yeast and Drosophila models also suggest TAF15 as a potential aggregation prone and disease causing protein when mutated, again like FUS/TLS, EWSR1 and TDP43 (6).</p>



Western blot analysis of cytosol or nuclear enriched fractions of cell line lysates using mouse mAb to TAF15, 4D71, dilution 1:1,000: [1] protein standard, [2] NIH-3T3 cytosol, [3] NIH-3T3 nuclear fraction, [4] HeLa cytosol, and [5] HeLa nuclear fraction. Double band at 56kDa and 68kDa detected predominantly in the nuclear enriched fraction corresponds to the TAF15 protein.



Immunofluorescent analysis of HeLa cells stained with mouse mAb to TATA-box binding protein associated factor 15, TAF15, MCA-4D71, dilution 1:500 in red, and costained with rabbit pAb to GAPDH, GAPDH, dilution 1:1,000 in green. Blue is Hoechst staining of nuclear DNA. The 4D71 antibody reveals TAF15 protein expressed exclusively in the nuclei of the cells, while GAPDH antibody produces strong cytoplasmic staining.