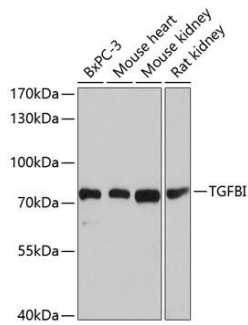
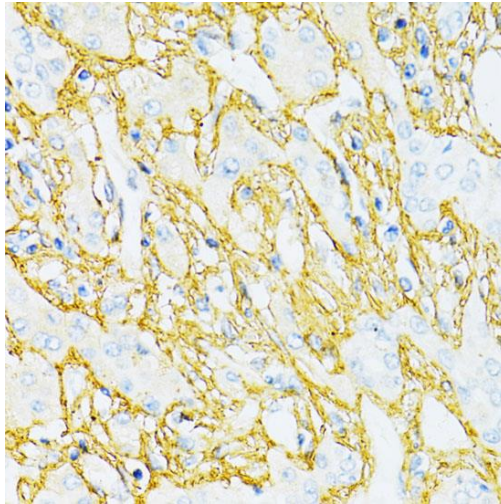
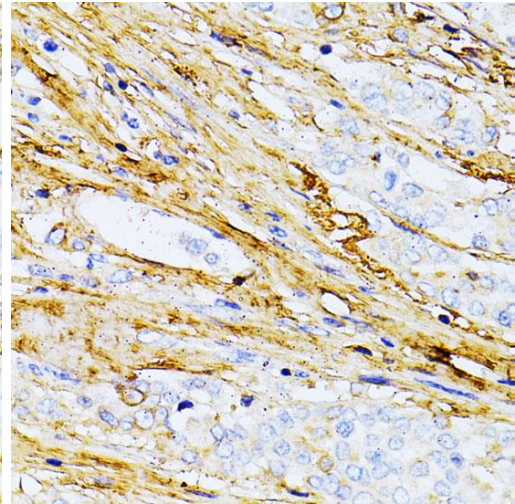

| | |
|--------------------------|--|
| Product name: | TGF beta1 |
| Cat number: | AB-84169 |
| Size: | 100 ug |
| Clone: | POLY |
| Concentration: | 1mg/ml |
| Host: | Rb |
| Isotype: | IgG |
| Immunogen: | Recombinant fusion protein containing a sequence corresponding to amino acids 481-683 of human TGFBI |
| Reactivity: | Hu,Ms |
| Applications: | Western Blot: 1:500 - 1:2000 Immunohistochemistry: 1:50 - 1:200 |
| Molecular Weight: | 75kDa |
| Purification: | Aff. Pur. |
| Form: | Liquid |
| Buffer: | PBS with 0.02% sodium azide,50% glycerol,pH7.3. |
| Storage: | Store at -20°C. Avoid freeze / thaw cycles. |
| Background: | This gene encodes an RGD-containing protein that binds to type I, II and IV collagens. The RGD motif is found in many extracellular matrix proteins modulating cell adhesion and serves as a ligand recognition sequence for several integrins. This protein plays a role in cell-collagen interactions and may be involved in endochondrial bone formation in cartilage. The protein is induced by transforming growth factor-beta and acts to inhibit cell adhesion. Mutations in this gene are associated with multiple types of corneal dystrophy. |



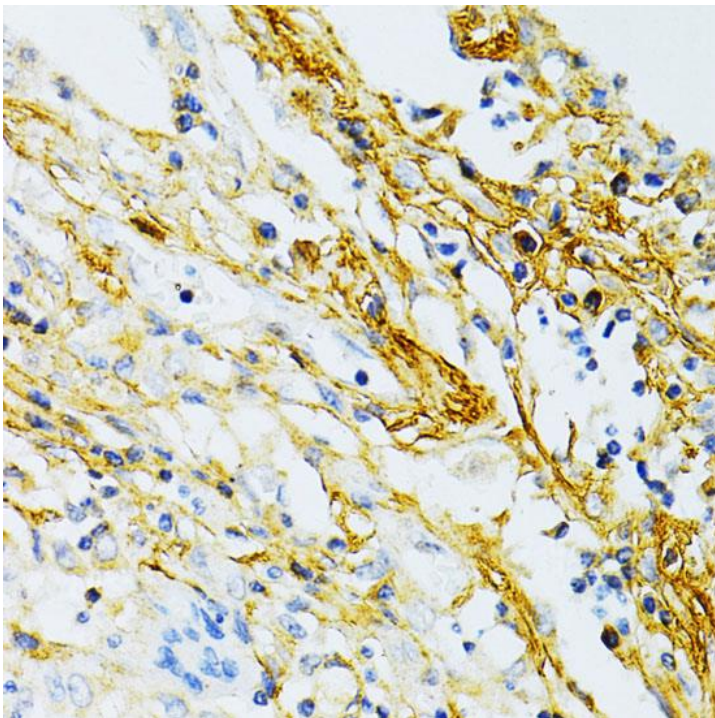
Western blot analysis of extracts of various cell lines, using TGFBI antibody at 1:1,000 dilution. Secondary antibody: HRP Goat Anti-Rabbit IgG (H+L) at 1:10,000 dilution. Lysates/proteins: 25ug per lane. Blocking buffer: 3% nonfat dry milk in TBST. Detection: ECL Basic Kit. Exposure time: 5s.



Immunohistochemistry of paraffin embedded human liver cancer using TGFBI antibody at dilution of 1:100 (40x lens).



Immunohistochemistry of paraffin embedded human colon carcinoma using TGFBI antibody at dilution of 1:100 (40x lens).



Immunohistochemistry of paraffin embedded human lung cancer using TGFBI antibody at dilution of 1:100 (40x lens).