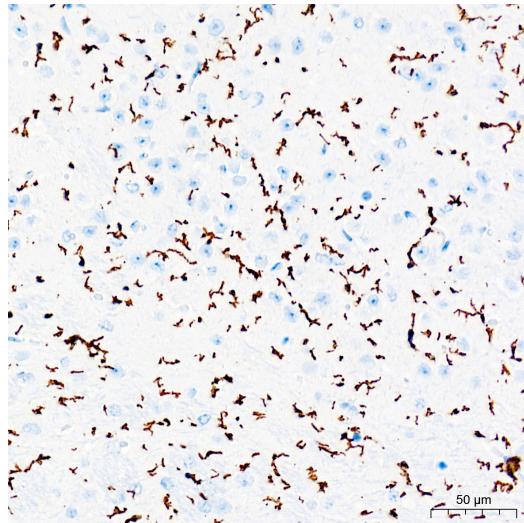
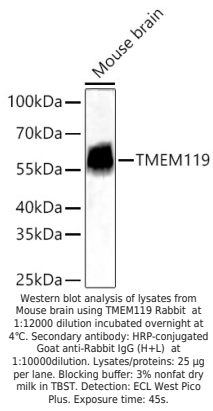
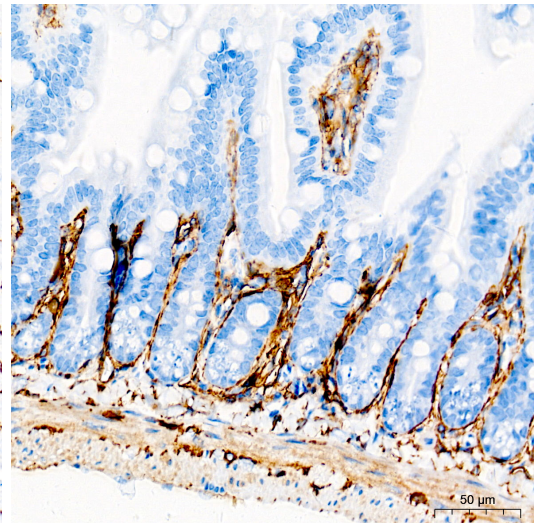


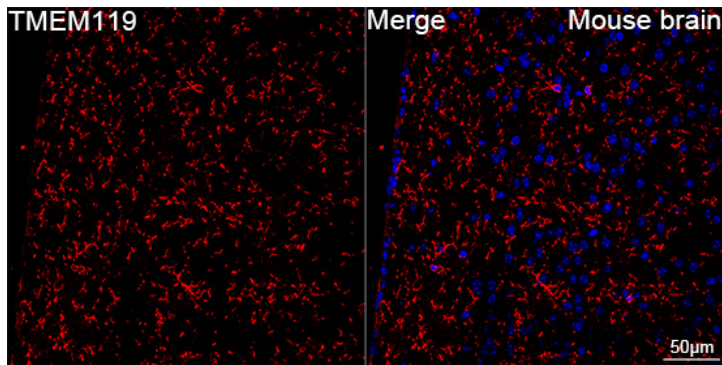
Product name:	TMEM119 Rabbit Polyclonal Antibody
Cat number:	AB-84816
Conjugate:	Unconjugated
Size:	100 ug
Clone:	POLY
Concentration:	1mg/ml
Host:	Rabbit
Isotype:	IgG
Immunogen:	Recombinant protein of human TMEM119.
Reactivity:	Mouse, Human
Applications:	Western Blot: 1:6000 - 1:24000 Immunohistochemistry (paraffin-embedded tissues): 1:2000 - 1:8000 Immunofluorescence: 1:500 - 1:2000 Immunocytochemistry: 1:500 - 1:2000 ELISA Recommended starting concentration is 1 µg/mL.
Molecular Weight:	56kDa
Purification:	Affinity Purified
Form:	Liquid
Buffer:	PBS with 0.09% Sodium azide,0.05% BSA,50% glycerol,pH7.3.
Storage:	Store at -20°C. Avoid freeze / thaw cycles.
Background:	Involved in positive regulation of bone mineralization; positive regulation of osteoblast differentiation; and positive regulation of osteoblast proliferation. Located in plasma membrane.



Immunohistochemistry analysis of paraffin-embedded Mouse brain tissue using TMEM119 Rabbit at a dilution of 1:6000 (40x lens). High pressure antigen retrieval performed with 0.01M Tris-EDTA Buffer (pH 9.0) prior to IHC staining.



Immunohistochemistry analysis of paraffin-embedded Mouse intestine tissue using TMEM119 Rabbit at a dilution of 1:6000 (40x lens). High pressure antigen retrieval performed with 0.01M Tris-EDTA Buffer (pH 9.0) prior to IHC staining.



Confocal imaging of paraffin-embedded Mouse brain tissue using TMEM119 Rabbit dilution 1:500 followed by a further incubation with Cy3 Goat Anti-Rabbit IgG (H+L) (AS007, dilution 1:500) (Red). DAPI was used for nuclear staining (Blue). High pressure antigen retrieval performed with 0.01M Citrate Buffer (pH 6.0) prior to IF staining. Objective: 40x.