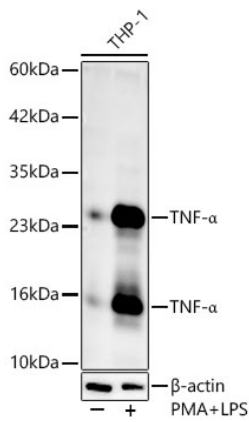
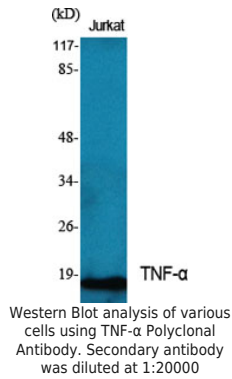


---

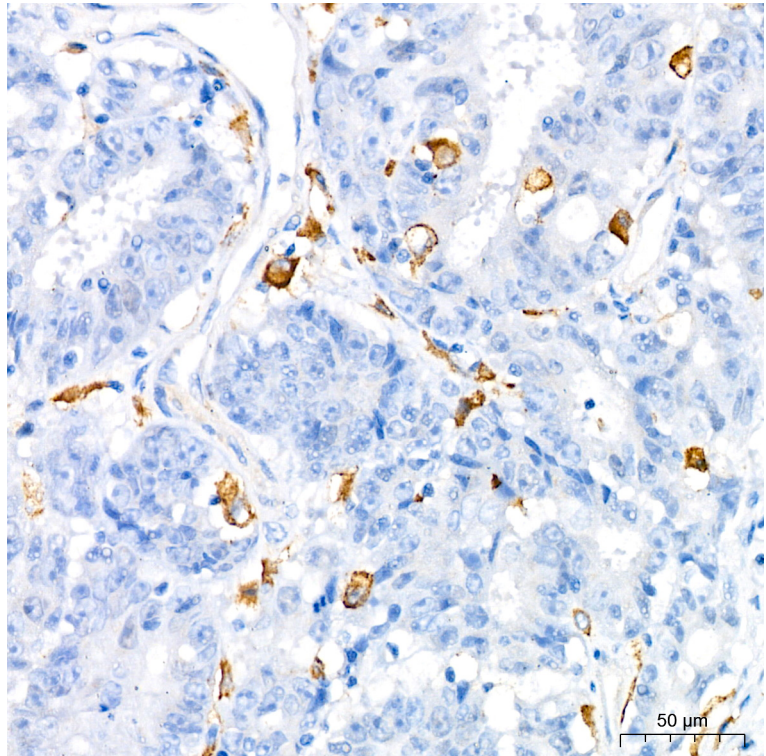
<b>Product name:</b>	TNF alpha Rabbit Polyclonal Antibody
<b>Cat number:</b>	AB-90222
<b>Conjugate:</b>	Unconjugated
<b>Size:</b>	100 ug
<b>Clone:</b>	POLY
<b>Concentration:</b>	1mg/ml
<b>Host:</b>	Rb
<b>Isotype:</b>	IgG
<b>Immunogen:</b>	The antiserum was produced against synthesized peptide derived from human TNFA. AA range:141-190.
<b>Reactivity:</b>	Hu, Ms, Rt
<b>Applications:</b>	Western Blot: 1/500 - 1/2000 Immunohistochemistry(paraffin-embedded tissues) 1:100-300 Immunofluorescence: 1:100-300 ELISA: 1/20000
<b>Molecular Weight:</b>	16kD
<b>Purification:</b>	The antibody was affinity-purified from rabbit antiserum by affinity-chromatography using epitope-specific immunogen.
<b>Form:</b>	Liquid
<b>Buffer:</b>	Liquid in PBS containing 50% glycerol, 0.5% BSA and 0.02% sodium azide.
<b>Storage:</b>	Store at -20°C. Avoid repeated freeze-thaw cycles.
<b>Background:</b>	This gene encodes a multifunctional proinflammatory cytokine that belongs to the tumor necrosis factor (TNF) superfamily. This cytokine is mainly secreted by macrophages. It can bind to, and thus functions through its receptors TNFRSF1A/TNFR1 and TNFRSF1B/TNFR. This cytokine is involved in the regulation of a wide spectrum of biological processes including cell proliferation, differentiation, apoptosis, lipid metabolism, and coagulation. This cytokine has been implicated in a variety of diseases, including autoimmune diseases, insulin resistance, and cancer. Knockout studies in mice also suggested the neuroprotective function of this cytokine.



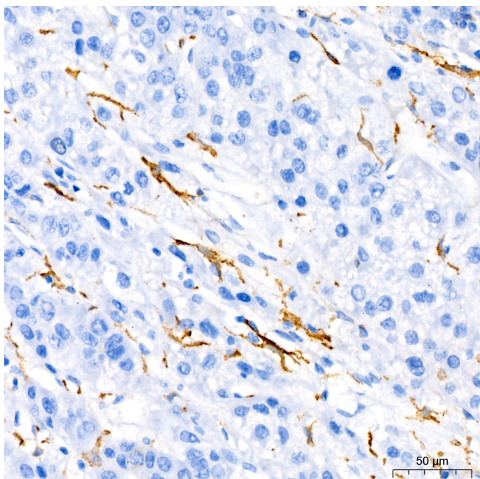
Western blot analysis of THP-1, using TNF- $\alpha$  Rabbit pAb at 1:1000 dilution. THP-1 cells were treated by PMA/TPA (80 nM) at 37°C for overnight and LPS (1  $\mu$ g/ml) at 37°C for 6 hours. Secondary antibody: HRP Goat Anti-Rabbit IgG (H+L) at 1:10000 dilution. Lysates/proteins: 25ug per lane. Blocking buffer: 3% nonfat dry milk in TBST. Detection: ECL West Pico Plus. Exposure time: 60s.



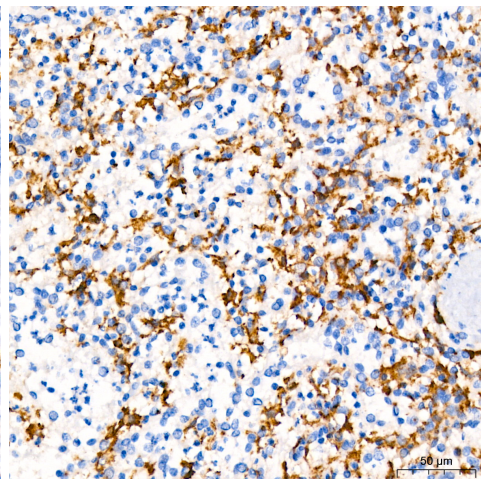
Western Blot analysis of various cells using TNF- $\alpha$  Polyclonal Antibody. Secondary antibody was diluted at 1:20000



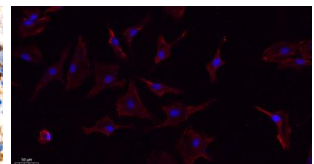
Immunohistochemistry of paraffinembedded human colon carcinoma using TNF- $\alpha$  Rabbit pAb at dilution of 1:1000 (40x lens). Perform high pressure antigen retrieval with 10 mM citrate buffer pH 6.0 before commencing with IHC staining protocol.



Immunohistochemistry of paraffinembedded human liver using TNF- $\alpha$  Rabbit pAb at dilution of 1:1000 (40x lens). Perform high pressure antigen retrieval with 10 mM citrate buffer pH 6.0 before commencing with IHC staining protocol.



Immunohistochemistry of paraffinembedded human spleen using TNF- $\alpha$  Rabbit pAb at dilution of 1:1000 (40x lens). Perform high pressure antigen retrieval with 10 mM citrate buffer pH 6.0 before commencing with IHC staining protocol.



Immunofluorescence analysis of A549. 1. primary Antibody (red) was diluted at 1:200 (4°C overnight). 2. Goat Anti Rabbit IgG (H&L) - Alexa Fluor 594 Secondary antibody was diluted at 1:1000 (room temperature, 50min). 3. Picture B: DAPI (blue) 10min.