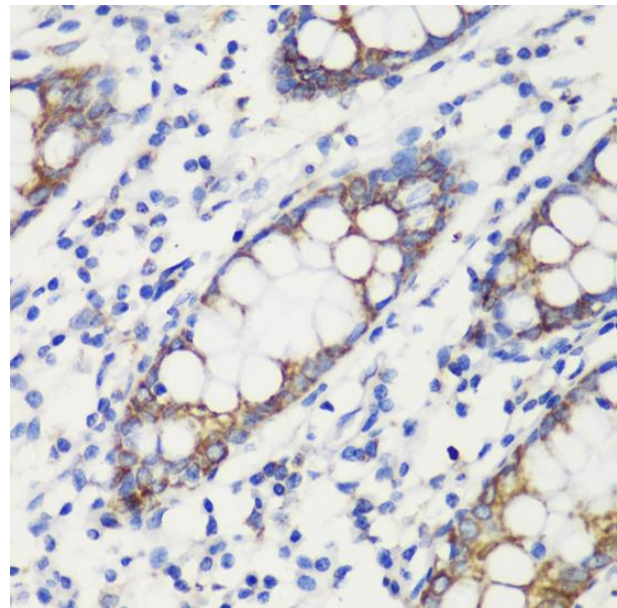
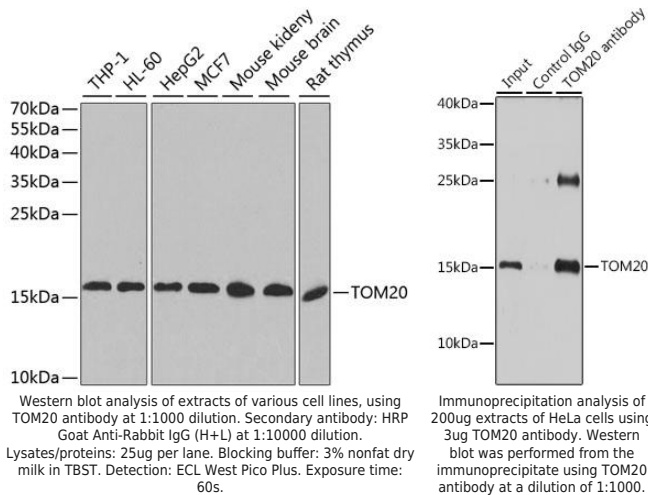
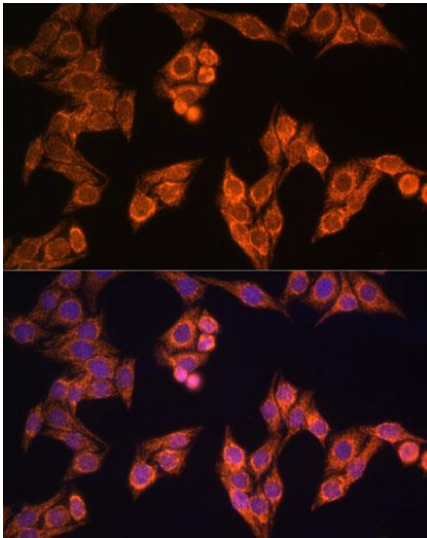


Product name:	TOM20
Cat number:	MAB-94609
Conjugate:	Unconjugated
Size:	100 ug
Clone:	EPR15581-54
Concentration:	1mg/ml
Host:	Rb
Isotype:	IgG
Immunogen:	Recombinant fusion protein containing a sequence corresponding to amino acids 20-145 of human TOM20 (NP_055580.1).
Reactivity:	Hu, Ms, Rt
Applications:	Western Blot: 1:500 - 1:2000 Immunohistochemistry: 1:50 - 1:200 Immunofluorescence: 1:20 - 1:50 Immunoprecipitation: 1:50 - 1:200
Molecular Weight:	16kDa
Purification:	Aff. Pur.
Form:	Liquid
Buffer:	PBS with 0.02% sodium azide, 50% glycerol, pH 7.3.
Storage:	Store at -20°C. Avoid freeze / thaw cycles.

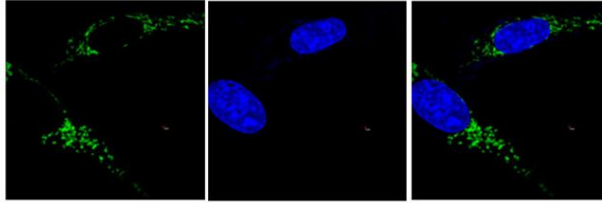


Immunohistochemistry of paraffin embedded human colon using TOM20 antibody at dilution of 1:100 (40x lens).



Immunofluorescence analysis of HeLa cells using TOM20 antibody at dilution of 1:100. Blue: DAPI for nuclear staining.

IF-Tom20



Review for TOM20 Rabbit mAb Experiment Type Immunofluorescence (IF) Sample: Mouse brown fat cells