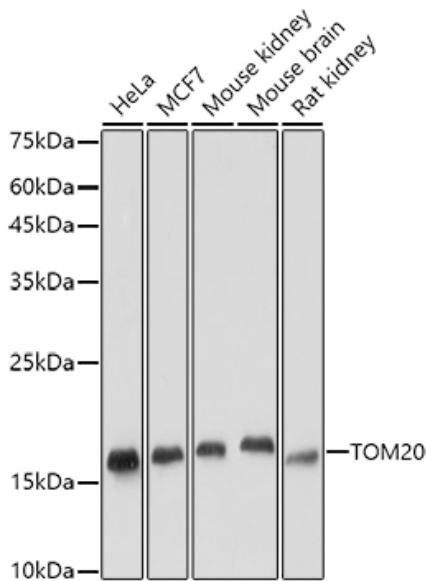
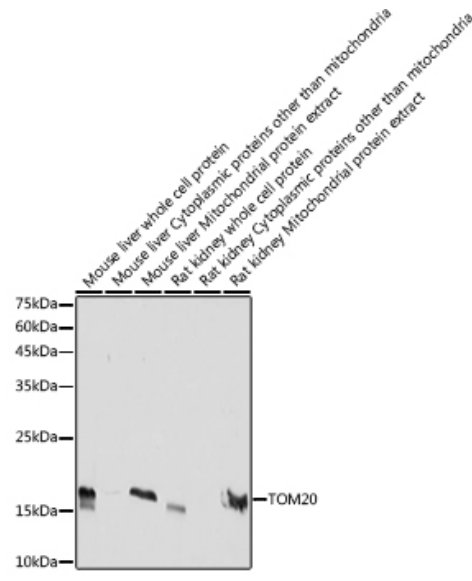
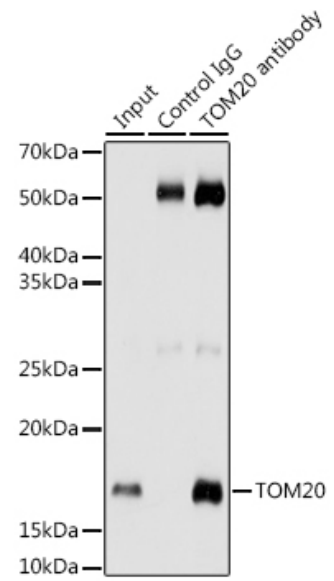

Product name:	TOM20 Rabbit Monoclonal Antibody
Cat number:	MAB-94758
Conjugate:	Unconjugated
Size:	100 ug
Clone:	ARC5002-01
Concentration:	1mg/ml
Host:	Rabbit
Isotype:	IgG
Immunogen:	Recombinant fusion protein containing a sequence corresponding to amino acids 20-145 of human TOM20
Reactivity:	Hu, Ms, Rt
Applications:	Western Blot: 1:2000 - 1:6000 Immunohistochemistry: 1:50 - 1:200 Immunofluorescence: 1:100 - 1:500 Immunocytochemistry 1:100 - 1:500 Immunoprecipitation: 1:500 - 1:1000
Molecular Weight:	16kDa
Purification:	Aff. Pur.
Form:	Liquid
Buffer:	PBS with 0.05% proclin300,0.05% BSA,50% glycerol,pH7.3.
Storage:	Store at -20°C. Avoid freeze / thaw cycles.
Background:	<p>Central component of the receptor complex responsible for the recognition and translocation of cytosolically synthesized mitochondrial preproteins. Together with TOM22 functions as the transit peptide receptor at the surface of the mitochondrion outer membrane and facilitates the movement of preproteins into the TOM40<br role="presentation" />translocation pore (By similarity. Required for the translocation across the mitochondrial outer membrane of cytochrome P450 monooxygenases.</p></p>



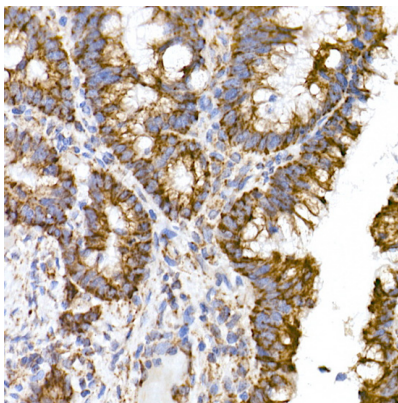
Western blot analysis of extracts of various cell lines, using TOM20 antibody at 1:5000 dilution. Secondary antibody: HRP Goat Anti-Rabbit IgG (H+L) at 1:10000 dilution. Lysates/proteins: 25ug per lane. Blocking buffer: 3% nonfat dry milk in TBST. Detection: ECL Basic Kit Exposure time: 60s.



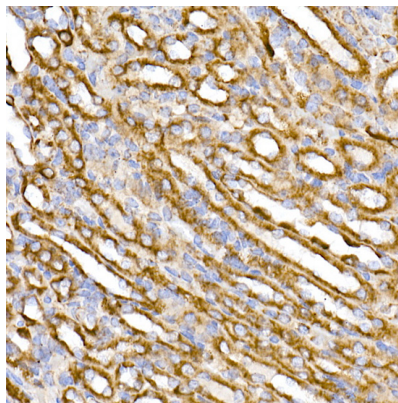
Western blot analysis of extracts of various cell lines, using TOM20 antibody at 1:5000 dilution. Secondary antibody: HRP Goat Anti-Rabbit IgG (H+L) at 1:10000 dilution. Lysates/proteins: 25ug per lane. Blocking buffer: 3% nonfat dry milk in TBST. Detection: ECL Basic Kit Exposure time: 10s.



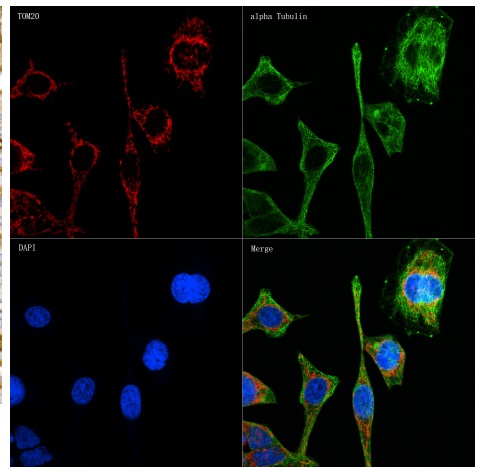
Immunoprecipitation analysis of 200ug extracts of HeLa cells using 3ug TOM20 antibody. Western blot was performed from the immunoprecipitate using TOM20 antibody at a dilution of 1:1000.



Immunohistochemistry of paraffin embedded human colon carcinoma using TOM20 Rabbit mAb at dilution of 1:50 (40x lens). Perform microwave antigen retrieval with 10 mM Tris/EDTA buffer pH 9.0 before commencing with IHC staining protocol.



Immunohistochemistry of paraffin embedded mouse kidney using TOM20 Rabbit mAb at dilution of 1:50 (40x lens). Perform microwave antigen retrieval with 10 mM Tris/EDTA buffer pH 9.0 before commencing with IHC staining protocol.



Confocal imaging of HeLa cells using TOM20 Rabbit mAb dilution 1:100 (Red). The cells were counterstained with α -Tubulin Mouse mAb (dilution 1:400) (Green). DAPI was used for nuclear staining (blue). Objective: 60x.