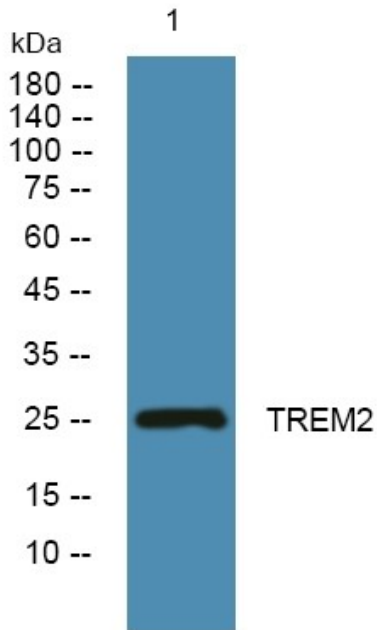


<b>Product name:</b>	TREM2 Rabbit Polyclonal Antibody
<b>Cat number:</b>	AB-J3026
<b>Conjugate:</b>	Unconjugated
<b>Size:</b>	100ug
<b>Clone:</b>	POLY
<b>Concentration:</b>	1mg/ml
<b>Host:</b>	Rb
<b>Isotype:</b>	IgG
<b>Immunogen:</b>	Synthesized peptide derived from a region of human TREM2
<b>Reactivity:</b>	Hu, Ms
<b>Applications:</b>	WB 1:500-2000 ELISA 1:5000
<b>Molecular Weight:</b>	25kDa
<b>Purification:</b>	Aff. Pur.
<b>Form:</b>	Liquid
<b>Buffer:</b>	PBS containing 50% glycerol, 0.5% BSA and 0.02% sodium azide.
<b>Storage:</b>	Store at -20°C. Avoid repeated freeze-thaw cycles.
<b>Background:</b>	Triggering receptor expressed on myeloid cells 2(TREM2) Homo sapiens This gene encodes a membrane protein that forms a receptor signaling complex with the TYRO protein tyrosine kinase binding protein. The encoded protein functions in immune response and may be involved in chronic inflammation by triggering the production of constitutive inflammatory cytokines. Defects in this gene are a cause of polycystic lipomembranous osteodysplasia with sclerosing leukoencephalopathy (PLOSL). Alternative splicing results in multiple transcript variants encoding different isoforms.



Western blot analysis of lysates from DU145 cells,  
primary antibody was diluted at 1:1000, 4°over night