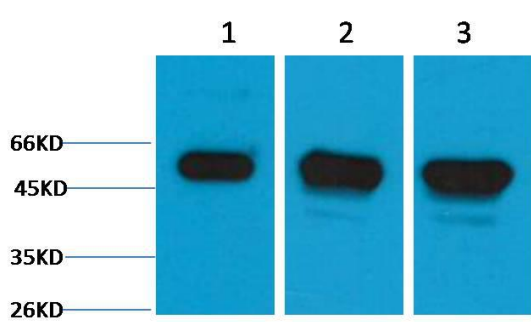
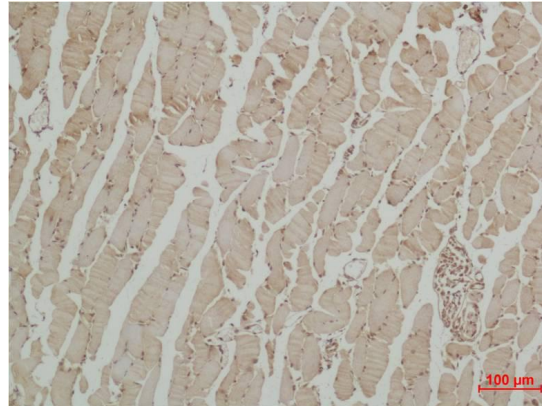


---

<b>Product name:</b>	Tubulin beta III (TUJ-1) Rabbit Polyclonal Antibody
<b>Cat number:</b>	AB-81596
<b>Conjugate:</b>	Unconjugated
<b>Size:</b>	100 ug
<b>Clone:</b>	POLY
<b>Concentration:</b>	1mg/ml
<b>Host:</b>	Rabbit
<b>Isotype:</b>	IgG
<b>Immunogen:</b>	Synthetic Peptide
<b>Reactivity:</b>	Human;Rat;Mouse
<b>Applications:</b>	Western Blot: 1:2000 - 1:5000 Immunohistochemistry (paraffin-embedded tissues): 1:200-500 &nbsp;
<b>Molecular Weight:</b>	50kDa
<b>Purification:</b>	The antibody was affinity-purified from rabbit antiserum by affinity-chromatography using epitope-specific immunogen.
<b>Form:</b>	Liquid
<b>Buffer:</b>	Liquid in PBS containing 50% glycerol, 0.5% BSA and 0.02% sodium azide.
<b>Storage:</b>	Store at -20°C. Avoid repeated freeze-thaw cycles.
<b>Background:</b>	Tubulin beta 3 class III (TUBB3). This gene encodes a class III member of the beta tubulin protein family. Beta tubulins are one of two core protein families (alpha and beta tubulins) that heterodimerize and assemble to form microtubules. This protein is primarily expressed in neurons and may be involved in neurogenesis and axon guidance and maintenance. Mutations in this gene are the cause of congenital fibrosis of the extraocular muscles type 3. Alternate splicing results in multiple transcript variants. A pseudogene of this gene is found on chromosome 6.



Western blot analysis of 1) Hela, 2) Mouse Brain, 3) Rat Brain tissue with  $\beta$  III Tubulin Rabbit Polyclonal Ab diluted at 1:5,000.



Immunohistochemical analysis of paraffin-embedded Mouse Skeletal Muscle Tissue using  $\beta$  III Tubulin Rabbit Polyclonal Ab diluted at 1:500.