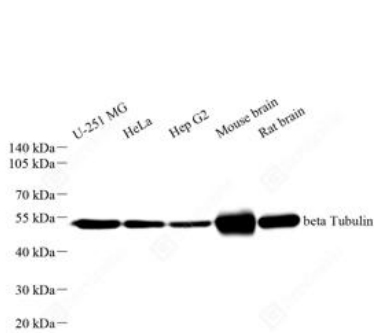
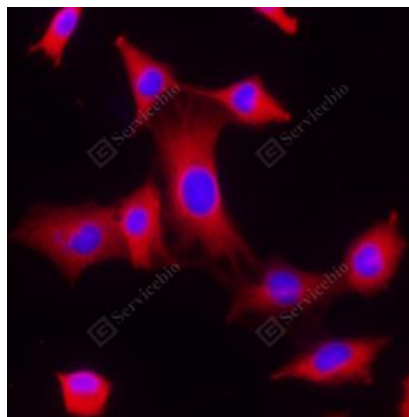


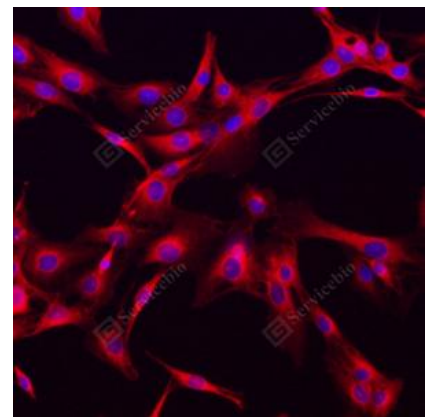
<b>Product name:</b>	Tubulin Beta Rabbit Monoclonal Antibody
<b>Cat number:</b>	MABS152667
<b>Conjugate:</b>	unconjugated
<b>Size:</b>	200 ug
<b>Clone:</b>	TUB02
<b>Concentration:</b>	1mg/ml
<b>Host:</b>	Rabbit
<b>Isotype:</b>	IgG, $\kappa$
<b>Immunogen:</b>	Recombinant protein corresponding to Human beta Tubulin
<b>Reactivity:</b>	Species, Human, Mouse, Rat
<b>Applications:</b>	Applications Dilution WB 1: 5000-1: 10000 ICC/IF 1: 100-1: 300
<b>Purification:</b>	Affinity purification
<b>Form:</b>	Liquid
<b>Buffer:</b>	PBS with 0.15% ProClin300, 100 $\mu$ g/mL BSA and 50% glycerol.
<b>Storage:</b>	Store at -20°C for one year. Avoid repeated freeze/thaw cycles.
<b>Background:</b>	Tubulin is the major constituent of microtubules. It binds two moles of GTP, one at an exchangeable site on the beta chain and one at a non-exchangeable site on the alpha chain.



WB analysis of beta Tubulin. Sample: Protein treated by RIPA Lysis Buffer. Blocking buffer: 3% Nonfat dry milk in TBST, RT, 1h. Primary antibody: 1: 5000, 4°C overnight. Secondary antibody: HRP conjugated Goat Anti-Rabbit IgG, 1: 5000, RT, 1h.



ICC analysis of beta Tubulin. Sample: C6, were fixed in pre-cooled methanol 10 minutes. Blocking buffer: 3% BSA in PBS, RT, 30min. Primary antibody: 1: 100, 4°C overnight. Secondary antibody: Cy3 conjugated Goat Anti-Rabbit IgG, 1: 300, RT, 1h.



ICC analysis of beta Tubulin. Sample: C6, were fixed in pre-cooled methanol 10 minutes. Blocking buffer: 3% BSA in PBS, RT, 30min. Primary antibody: 1: 300, 4°C overnight. Secondary antibody: Cy3 conjugated Goat Anti-Rabbit IgG, 1: 300, RT, 1h.