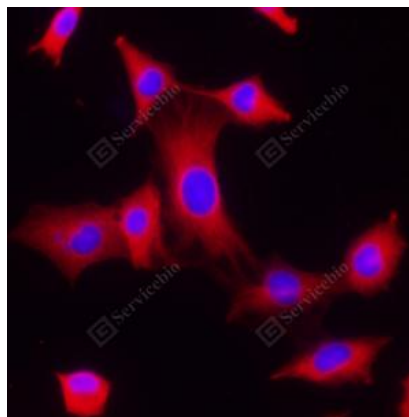


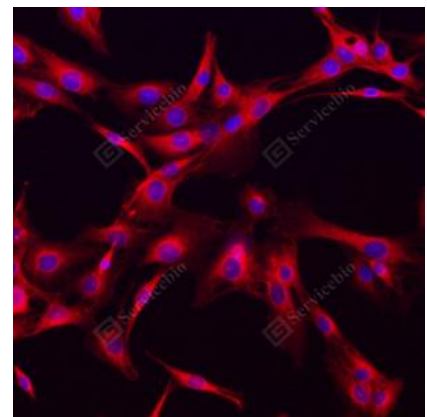
Product name:	Tubulin Beta Rabbit Polyclonal Antibody
Cat number:	ABS152667
Conjugate:	unconjugated
Size:	200 ug
Clone:	POLY
Concentration:	1mg/ml
Host:	Rabbit
Isotype:	IgG, κ
Immunogen:	Recombinant protein corresponding to Human beta Tubulin
Reactivity:	Species, Human, Mouse, Rat
Applications:	Applications Dilution WB 1: 5000-1: 10000 ICC/IF 1: 100-1: 300
Purification:	Affinity purification
Form:	Liquid
Buffer:	PBS with 0.15% ProClin300, 100 μ g/mL BSA and 50% glycerol.
Storage:	Store at -20°C for one year. Avoid repeated freeze/thaw cycles.
Background:	Tubulin is the major constituent of microtubules. It binds two moles of GTP, one at an exchangeable site on the beta chain and one at a non-exchangeable site on the alpha chain.



WB analysis of beta Tubulin. Sample: Protein treated by RIPA Lysis Buffer. Blocking buffer: 3% Nonfat dry milk in TBST, RT, 1h. Primary antibody: 1: 5000, 4°C overnight. Secondary antibody: HRP conjugated Goat Anti-Rabbit IgG, 1: 5000, RT, 1h.



ICC analysis of beta Tubulin. Sample: C6, were fixed in pre-cooled methanol 10 minutes. Blocking buffer: 3% BSA in PBS, RT, 30min. Primary antibody: 1: 100, 4°C overnight. Secondary antibody: Cy3 conjugated Goat Anti-Rabbit IgG, 1: 300, RT, 1h.



ICC analysis of beta Tubulin. Sample: C6, were fixed in pre-cooled methanol 10 minutes. Blocking buffer: 3% BSA in PBS, RT, 30min. Primary antibody: 1: 300, 4°C overnight. Secondary antibody: Cy3 conjugated Goat Anti-Rabbit IgG, 1: 300, RT, 1h.