

Product name: Tubulin betaIII Mouse Monoclonal Antibody

Cat number: MAB-94802

Conjugate: Unconjugated

Size: 100 ug

Clone: TU-16

Concentration: 1mg/ml

Host: Mouse

Isotype: IgG1

Immunogen: Peptide (C) 441-448 coupled to maleimide-activated keyhole limpet hemocyanin via cysteine added to the N-terminus of the neuron-specific peptide.

Reactivity: Human, Mouse, Rat

Applications: WesternBlot:1/5000 Immunohistochemistry:1/200-500

Molecular Weight: 50kDa

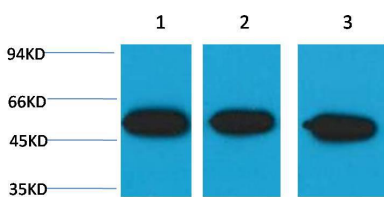
Purification: Aff. Pur.

Form: Liquid

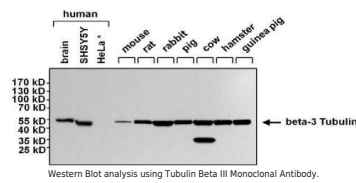
Buffer: PBS with 0.02% sodium azide and 50% glycerol pH 7.4.

Storage: Store at -20°C. Avoid repeated freeze-thaw cycles.

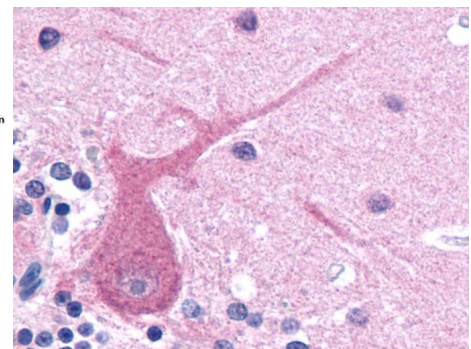
Background: Tubulin is the major constituent of microtubules. It exists as a heterodimer consisting of an alpha and a beta subunit. TUBB3 plays a critical role in proper axon guidance and maintenance.



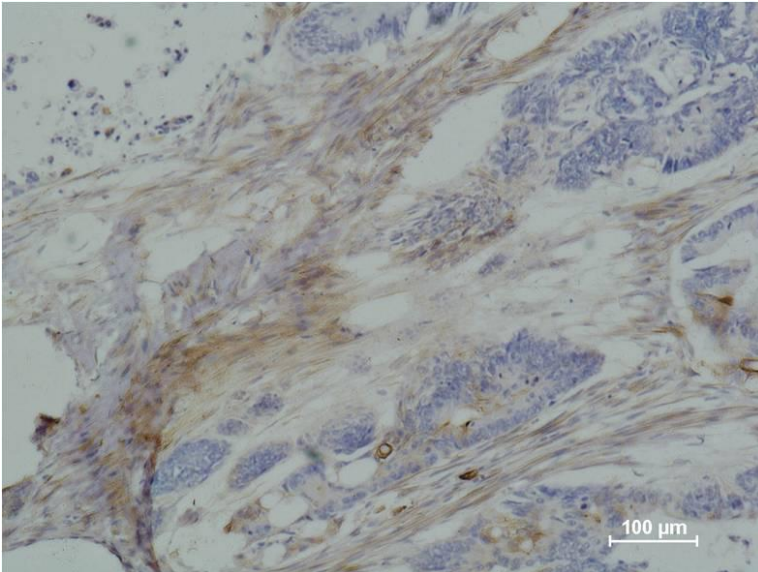
Western blot analysis of HeLa 2) Mouse Brain 3) Rat Brain with β III tubulin Mouse mAb diluted at:5000.



Western Blot analysis using Tubulin Beta III Monoclonal Antibody.



Immunohistochemistry staining of human brain (paraffin sections) using anti-betaIII tubulin.



Immunohistochemical analysis of paraffin-embedded human Colon carcinoma using b III tubulin Mouse mAb diluted at:500.