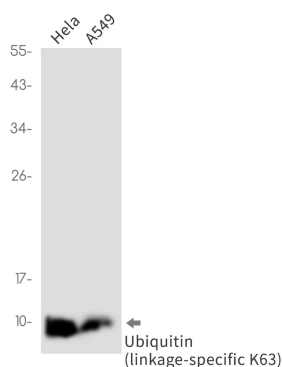
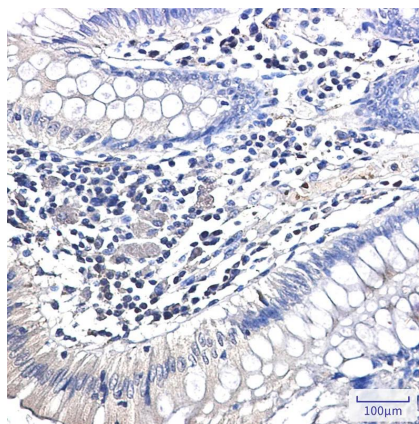


Product name:	Ubiquitin K63 Rabbit Monoclonal antibody
Cat number:	MABN03251
Conjugate:	Unconjugated
Size:	100µL
Concentration:	1mg/ml
Host:	Rabbit
Isotype:	IgG
Immunogen:	A synthetic peptide of human Ubiquitin (linkage-specific K63)
Reactivity:	Human
Applications:	WB 1:500-1:1000,IHC 1:50-1:100,ICC/IF 1:50-1:200
Molecular Weight:	8 kDa
Purification:	Affinity purification
Form:	liquid
Buffer:	50mM Tris-Glycine(pH 7.4), 0.15M NaCl, 40% Glycerol, 0.01% Sodium azide and 0.05% protective protein
Storage:	Store at 4°C short term. Aliquot and store at -20°C long term. Avoid freeze/thaw cycles.

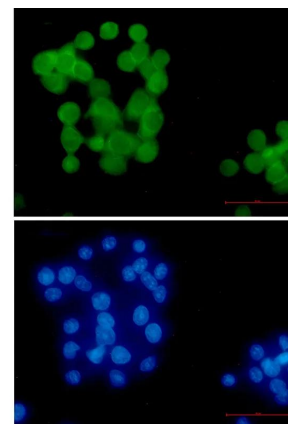
Background: Plays an important role in the ubiquitin-proteasome pathway. Ubiquitin can be covalently linked to many cellular proteins by the ubiquitination process, which targets proteins for degradation by the 26S proteasome. Three components are involved in the target protein-ubiquitin conjugation process. Ubiquitin is first activated by forming a thiolester complex with the activation component E1; the activated ubiquitin is subsequently transferred to the ubiquitin-carrier protein E2, then from E2 to ubiquitin ligase E3 for final delivery to the epsilon-NH2 of the target protein lysine residue.



Western blot analysis of Ubiquitin (linkage-specific K63) in HeLa, A549 lysates using Ubiquitin K63 antibody.



Immunohistochemistry analysis of paraffin-embedded Human colon cancer using Ubiquitin (linkage-specific K63) antibody. High-pressure and temperature Sodium Citrate pH 6.0 was used for antigen retrieval.



Immunocytochemistry analysis of Ubiquitin (linkage-specific K63) in HeLa using Ubiquitin (linkage-specific K63) antibody and DAPI (blue).