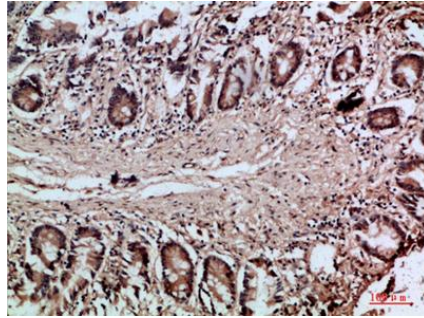
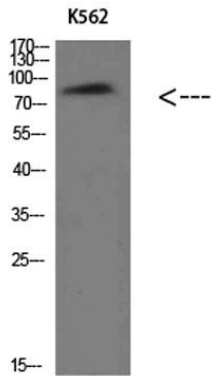
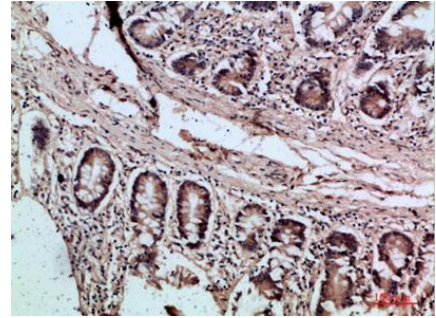


Product name:	Villin Rabbit Polyclonal Antibody
Cat number:	AB-84403
Conjugate:	Unconjugated
Size:	100 ug
Clone:	POLY
Concentration:	1mg/ml
Host:	Rabbit
Isotype:	IgG
Immunogen:	Synthesized peptide derived from Villin at AA range: 601-650
Reactivity:	Human, Mouse, Rat
Applications:	Western Blot: 1:500-2000Immunohistochemistry (paraffin-embedded tissues): 1:200
Molecular Weight:	90kDa
Purification:	The antibody was affinity-purified from rabbit antiserum by affinity-chromatography using epitope-specific immunogen.
Form:	Liquid
Buffer:	Liquid in PBS containing 50% glycerol, 0.5% BSA and 0.02% sodium azide.
Storage:	Store at -20°C. Avoid repeated freeze-thaw cycles.
Background:	This gene encodes a member of a family of calcium-regulated actin-binding proteins. This protein represents a dominant part of the brush border cytoskeleton which functions in the capping,severing, and bundling of actin filaments. Two mRNAs of 2.7 kb and 3.5 kb have been observed;they result from utilization of alternate poly-adenylation signals present in the terminal exon

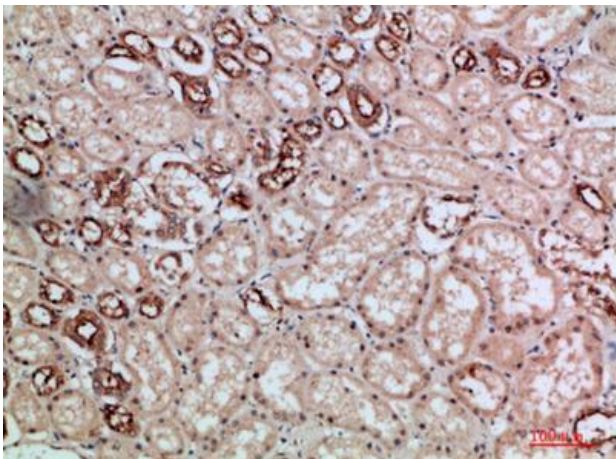


Immunohistochemical analysis of paraffin-embedded human-colon, antibody was diluted at 1:200



Immunohistochemical analysis of paraffin-embedded human-colon, antibody was diluted at 1:200

Western Blot analysis of K562 cells using Villin Polyclonal Antibody diluted at 1:500. Secondary antibody was diluted at 1:20000



Immunohistochemical analysis of paraffin-embedded human-kidney, antibody was diluted at 1:200