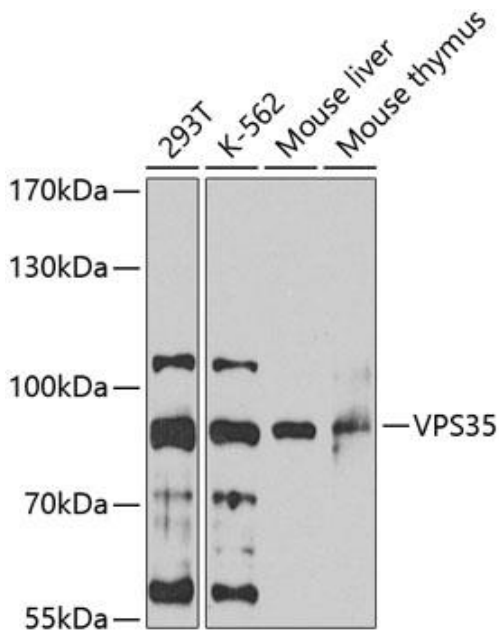


---

|                          |   |
|--------------------------|---|
| <b>Product name:</b>     | VPS35   |
| <b>Cat number:</b>       | AB-84318  |
| <b>Size:</b>             | 100 ug  |
| <b>Clone:</b>            | POLY  |
| <b>Concentration:</b>    | 1mg/ml  |
| <b>Host:</b>             | Rb  |
| <b>Isotype:</b>          | IgG   |
| <b>Immunogen:</b>        | Recombinant fusion protein containing a sequence corresponding to amino acids 1-250 of human VPS35.   |
| <b>Reactivity:</b>       | Hu, Ms  |
| <b>Applications:</b>     | WB 1:500 - 1:2000   |
| <b>Molecular Weight:</b> | 92kDa   |
| <b>Purification:</b>     | Aff. Pur.   |
| <b>Form:</b>             | Liquid  |
| <b>Buffer:</b>           | PBS with 0.02% sodium azide, 50% glycerol, pH7.3.   |
| <b>Storage:</b>          | Store at -20°C. Avoid freeze / thaw cycles.   |
| <b>Background:</b>       | <p>This gene belongs to a group of vacuolar protein sorting (VPS) genes. The encoded protein is a component of a large multimeric complex, termed the retromer complex, involved in retrograde transport of proteins from endosomes to the trans-Golgi network. The close structural similarity between the yeast and human proteins that make up this complex suggests a similarity in function. Expression studies in yeast and mammalian cells indicate that this protein interacts directly with VPS35, which serves as the core of the retromer complex.</p> |



Western blot analysis of extracts of various cell lines, using VPS35 antibody at 1:1000 dilution. Secondary antibody: HRP Goat Anti-Rabbit IgG (H+L) at 1:10000 dilution. Lysates/proteins: 25ug per lane. Blocking buffer: 3% nonfat dry milk in TBST. Detection: ECL Enhanced Kit. Exposure time: 60s.