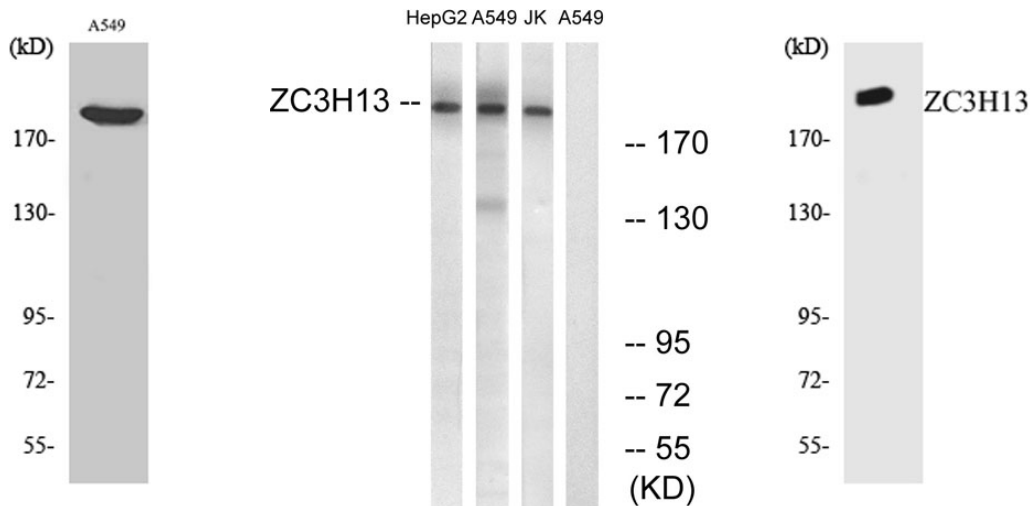


Product name: ZC3H13 Rabbit Polyclonal Antibody
Cat number: ABE3727
Conjugate: unconjugated
Size: 100 ug
Clone: Polyclonal
Concentration: 1 mg/ml
Host: Rabbit
Isotype: IgG
Immunogen: The antiserum was produced against synthesized peptide derived from human ZC3H13. AA range:1571-1620
Reactivity: Human; Mouse
Applications: Western Blot: 1/500 - 1/2000. ELISA: 1/10000. Not yet tested in other applications.
Molecular Weight: 200kD
Form: Liquid
Storage: -20°C/1 year
Background: PTM:Phosphorylated upon DNA damage, probably by ATM or ATR.,similarity:Contains 1 C3H1-type zinc finger.,



Western Blot analysis of various cells using ZC3H13 Polyclonal Antibody. Secondary antibody was diluted at 1:20000

Western blot analysis of lysates from A549, Jurkat, HepG2 cells, using ZC3H13 Polyclonal Antibody. The lane on the right is blocked with the synthesized peptide.

Western blot analysis of the lysates from HUVEC cells using ZC3H13 Antibody.