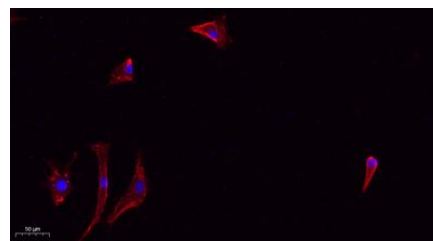
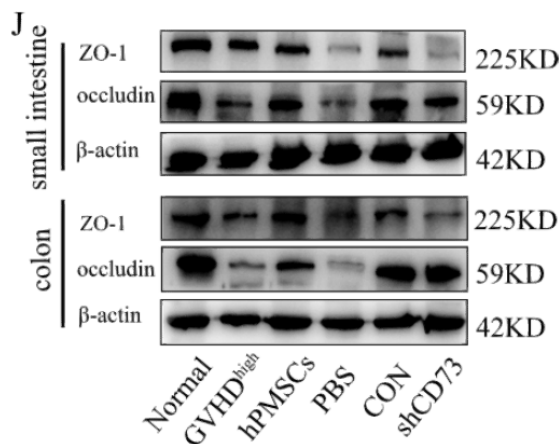


**Product name:** ZO1 Rabbit Polyclonal Antibody  
**Cat number:** AB-E16271  
**Conjugate:** Unconjugated  
**Size:** 100 ug  
**Clone:** POLY  
**Concentration:** 1mg/ml  
**Host:** Rabbit  
**Isotype:** IgG  
**Immunogen:** Synthesized peptide derived from part region of human protein.AA1600-1700.  
**Reactivity:** Human;Mouse  
**Applications:** Western Blot: 1:500-2000 Immunofluorescence: 1:100-300 ELISA 1:5000-20000  
**Molecular Weight:** 192kD  
**Purification:** The antibody was affinity-purified from rabbit antiserum by affinity-chromatography using epitope-specific immunogen.  
**Form:** Liquid  
**Buffer:** Liquid in PBS containing 50% glycerol, 0.5% BSA and 0.02% sodium azide.  
**Storage:** Store at -20°C. Avoid repeated freeze-thaw cycles.  
**Background:** This gene encodes a protein located on a cytoplasmic membrane surface of intercellular tight junctions. The encoded protein may be involved in signal transduction at cell-cell junctions. Alternative splicing of this gene results in multiple transcript variants.



Immunofluorescence analysis of A549. 1.primaryAntibody(red) was diluted at 1:200(4°C overnight). 2. Goat Anti Rabbit IgG (H&L) - Alexa Fluor 594 Secondaryantibody was diluted at 1:1000(room temperature,50min).3. Picture B: DAPI(blue) 10min.

**V** Human placental mesenchymal stromal cells modulate IFN- $\gamma$  and IL-10 secretion by CD4+T cells via CD73, and alleviate intestinal damage in mice with graft-versus-host disease.